

# PowerLift® Hoist



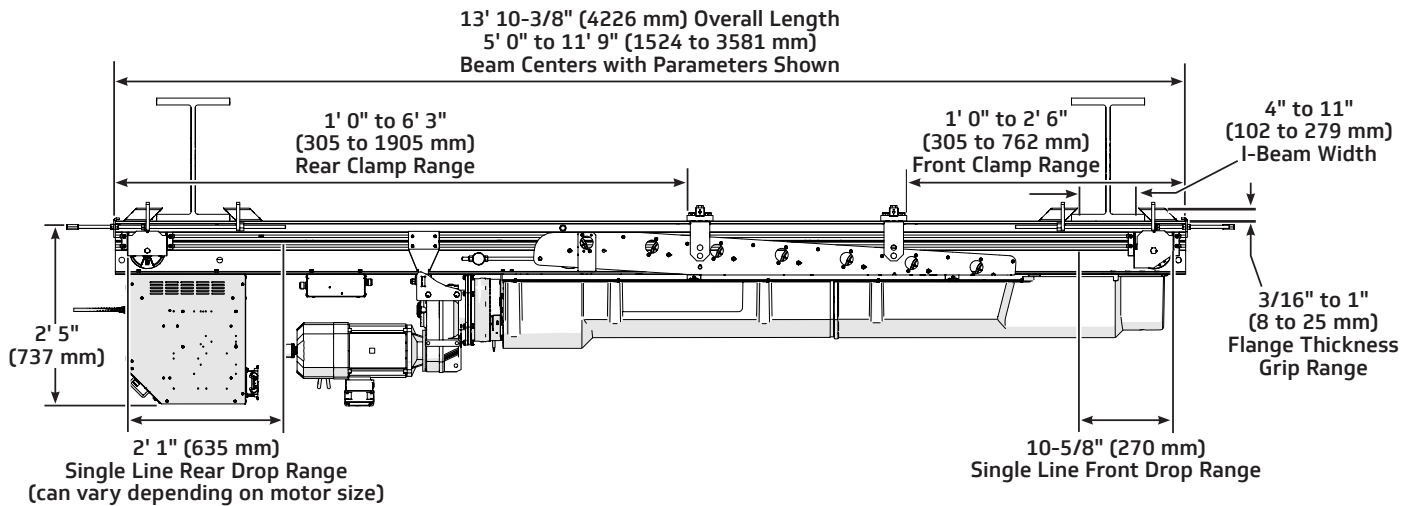
Welcome to the new Powerlift, now driven by Spikemark. Our seventh-generation Powerlift is as reliable as ever — delivering the economical, zero-fleet, high-performance design you know and trust, now paired with the power and modular flexibility of Spikemark controls.

- NEW Turbo Mode: Increase productivity at reduced loads:  
At half load, the 0–30 fpm and 0–120 fpm models run at 200% nominal speed, while the 0–180 fpm model reaches 150% nominal speed  
*\*see speeds and capacities based on model below*
- Load sensing and positioning available with supporting control system
- Redundant limit switches standard (up, down, up overtravel, down overtravel)
- Primary motor brake and secondary load side brake
- Three-year warranty against defects in materials or workmanship is provided on all J.R. Clancy equipment, additional warranty information is available at jrclancy.com

## Lift Lines and Travel

- Up to 62' (18.9 m) of travel with seven or fewer lift lines
- Up to 49' (14.9 m) of travel with eight lift lines
- One lift line can exit the hoist at the tail end of the hoist
- Optional continuous beam

## Dimensions

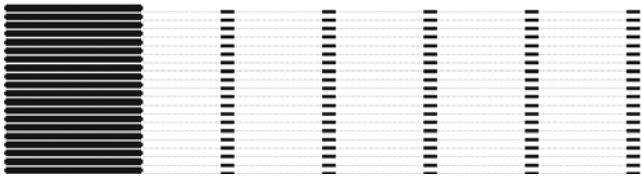


## Models

Part Number	Load Speed	Hoist Gross Capacity	Hoist Weight	Motor FLA		Control
				208 V	480 V	
018-P0221F-7P	20 fpm (0.1 m/s)	2100 lb (953 kg)	710 lb (322 kg)	5.4	2.45	Push Button
018-P0221F-7T	20 fpm (0.1 m/s)	2100 lb (953 kg)	710 lb (322 kg)	5.4	2.45	Sure Target
018-P0325V-7S	0-30 fpm (0-0.2 m/s) *0-60 fpm (0-0.3 m/s)	2500 lb (1134 kg) *1250 lb (567 kg)	730 lb (331 kg)	11	4.85	Spikemark
018-P1218V-7S	0-120 fpm (0-0.6 m/s) *0-240 fpm (0-1.2 m/s)	1850 lb (839 kg) *925 lb (420 kg)	770 lb (349 kg)	22	10	Spikemark
018-P1223V-7S	0-120 fpm (0-0.6 m/s) *0-240 fpm (0-1.2 m/s)	2350 lb (1066 kg) *1175 lb (533 kg)	810 lb (367 kg)	31	14	Spikemark
018-P1812V-7S	0-180 fpm (0-0.9 m/s) *0-270 fpm (0-1.4 m/s)	1200 lb (544 kg) *600 lb (272 kg)	770 lb (349 kg)	22	10	Spikemark
018-P1816V-7S	0-180 fpm (0-0.9 m/s) *0-270 fpm (0-1.4 m/s)	1650 lb (748 kg) *825 lb (374 kg)	810 lb (367 kg)	31	14	Spikemark

\*Speeds and capacities during Turbo Mode

## Center to Center Spacing Options

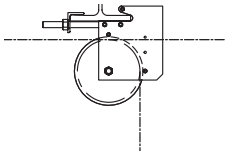


11" (279 mm) Set centers with all hoists adjacent to each other

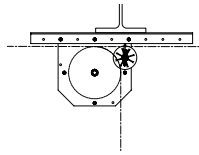


8" (203 mm) Set centers with hoists offset

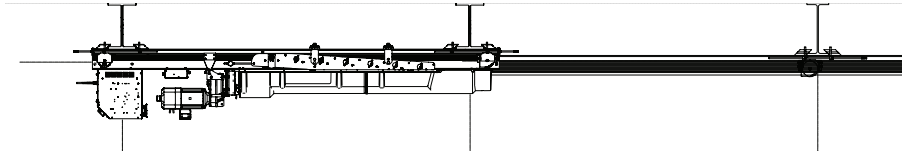
## Loft Block Options



19 Series loft blocks –  
underhung



Universal loft blocks –  
upright or underhung



Continuous beam mounted loft blocks –  
underhung

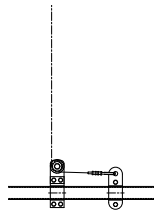
## Batten Attachment Options



Trim Chain/Alpha  
Chain



Pipe Clamp and  
Turnbuckle

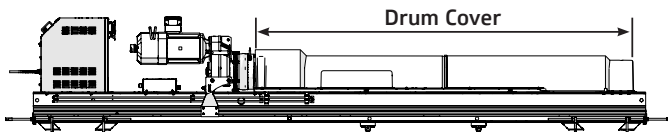


Batten Trim  
Clamp



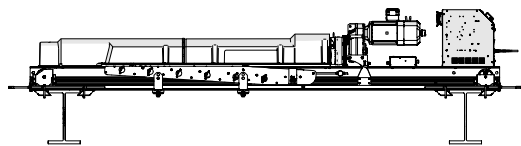
Batten Trim  
Plate

## Drum Cover Option

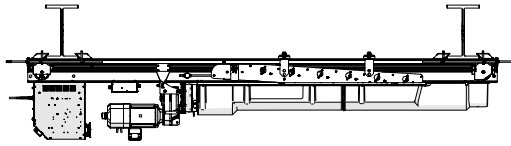


Required when hoist is within 106" (2692 mm) of a  
walking surface or 60" (1524 mm) of a railing

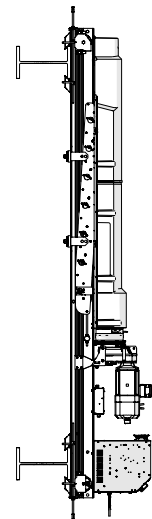
## Mounting Orientation Options



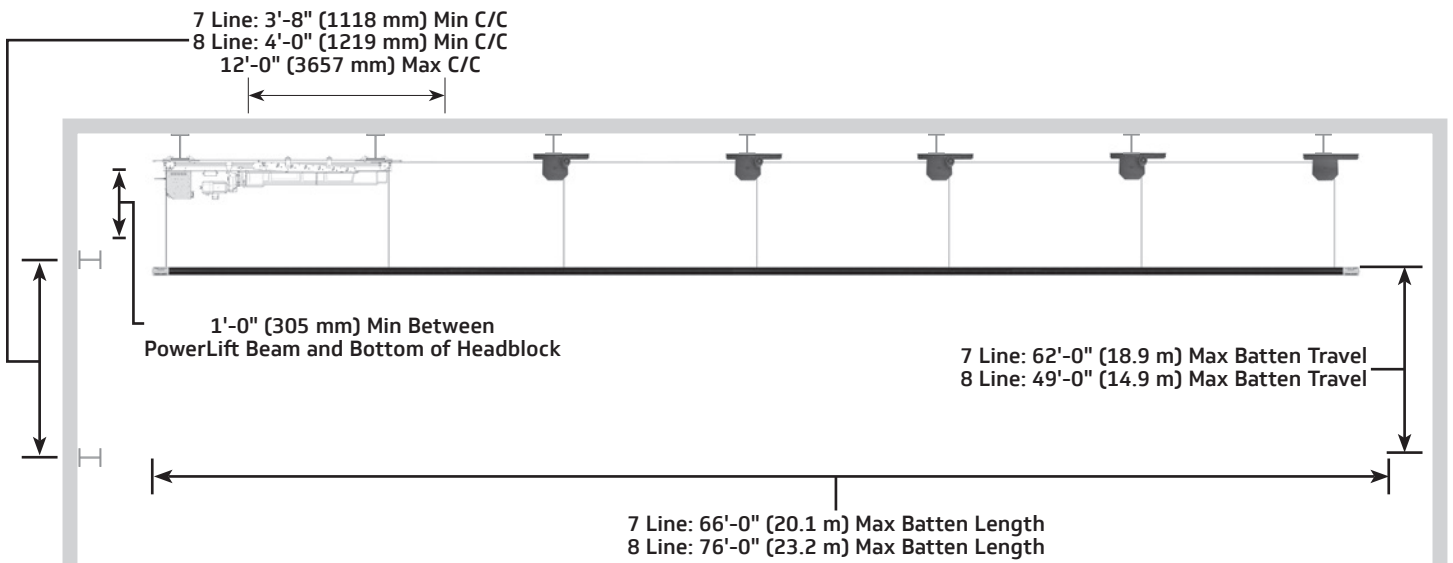
Upright



Underhung

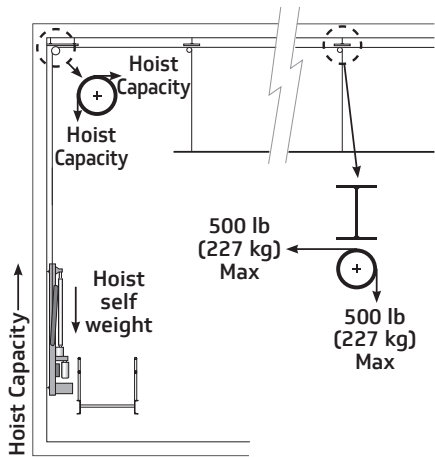


Vertical



**Loading Information**

The combined load on the lift lines associated with a single PowerLift hoist will not exceed the hoist capacity. Loads may be unevenly distributed on the batten with a maximum load of 500 lb (227 kg) on any individual lift line.



**Calculating Live Load Capacity:**

	Total hoist capacity:	
minus	Batten weight:	(3 lb/ft for each schedule 40 pipe batten and approximately 7 lb/ft for each connector strip)
minus	Pantograph weight:	(Approx 250 lb for 25' of travel and 350 lb for 50' of travel )
equals	Live Load Capacity:	Please contact your sales rep for additional configurations

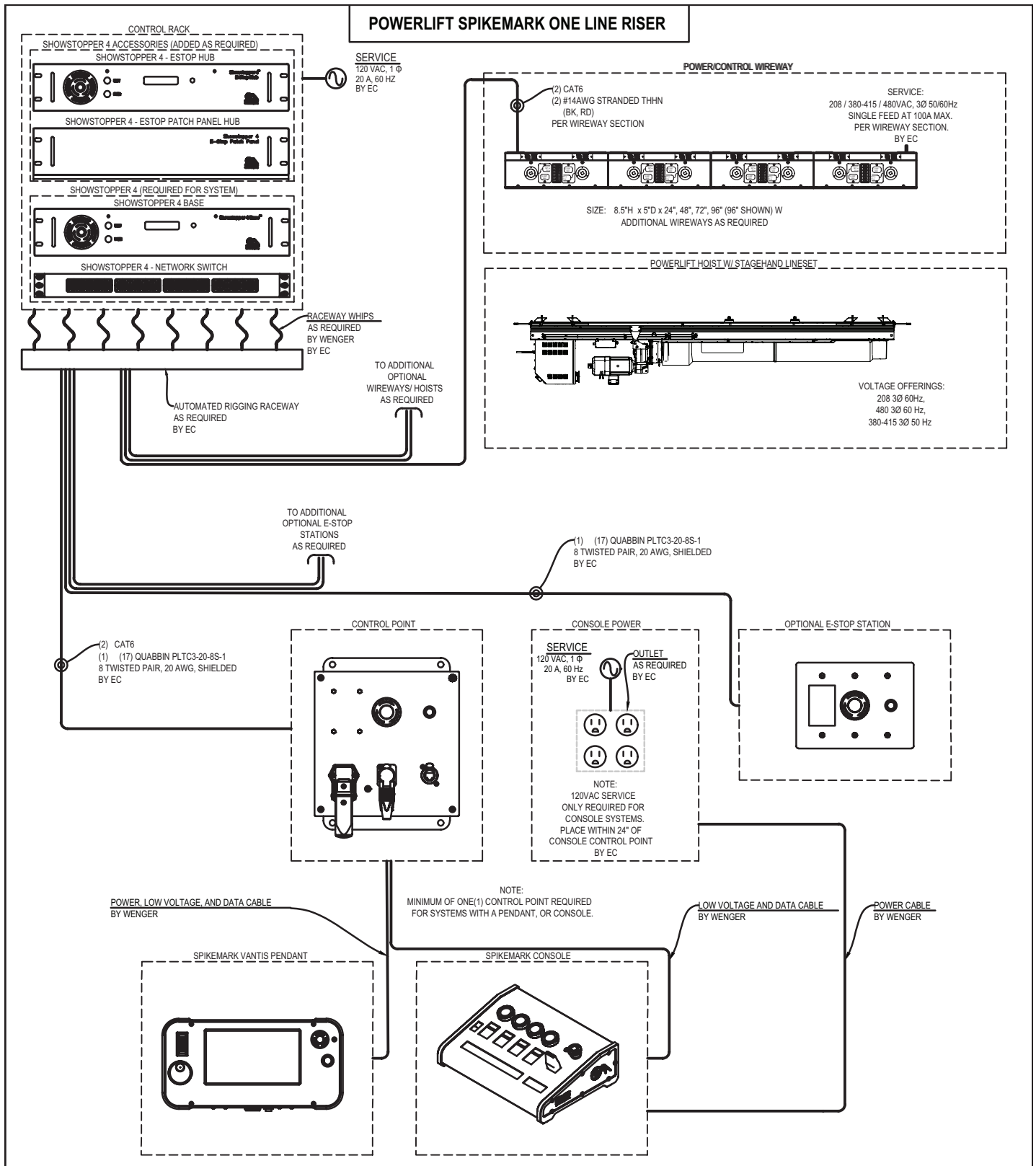
**Notes:**

- Systems with 5 lift lines may need to be de-rated to 1750 lb (794 kg) in order to prevent overloading of a single lift line
- Systems with 4 lift lines may need to be de-rated to 1350 lb (612 kg) in order to prevent overloading of a single lift line
- Systems with 3 lift lines may need to be de-rated to 800 lb (363 kg) in order to prevent overloading of a single lift line

**For minimum stacking height**

We recommend that the closest contact point be at least 6" (154 mm) away from the nearest obstruction. Batten connection type, hoist location, loft block type, cable management and building architecture can impact stacking height.

# PowerLift Riser — Typical



# Wenger®

CORPORATION

## Minnesota Location

Wenger Phone 800.4WENGER (493-6437) Wenger Worldwide +1.507.455.4100 | Parts & Service 800.887.7145 | wengercorp.com  
GearBoss Phone 800.493.6437 | gearboss.com  
555 Park Drive, PO Box 448 | Owatonna | MN 55060

## New York Location

J.R. Clancy Phone 800.836.1885 JR Clancy Worldwide +1.315.451.3440 | jrclancy.com | 7041 Interstate Island Road | Syracuse | NY 13209

## Rhode Island Location

Creative Conners Phone 401.289.2942 | creativeconners.com | 20 Avery Rd Cranston | RI 02910

## Texas Location

Texas Scenic Company Phone 210.684.0091 | texasscenic.com | 8053 Potranco Rd, San Antonio, TX 78251

© 2026 Wenger Corporation  
USA/2026-06